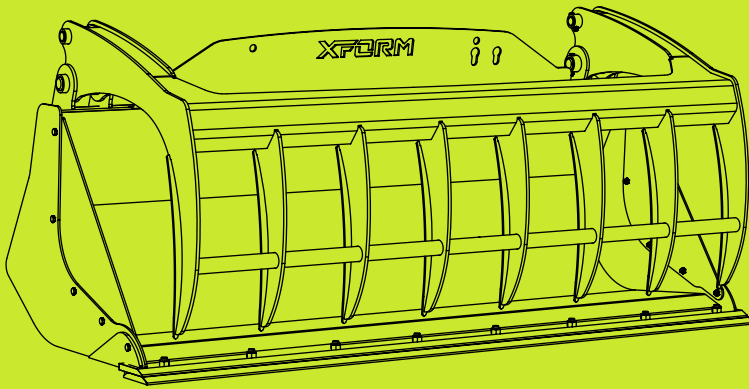


XFORM

ENGINEERING

Multi Shovel

Manual 2026



Contents

Important Information	3
Product Identification	4
Safety Instructions	5
Installation & Removal	6
Operating Instructions	7
Transporting Loads	8
Maintenance	9
Parts Diagram	10
Parts List > MS MH / MSK MHK	11 / 12
Warranty	13
UKCA Declaration of Conformity	14
CE Declaration of Conformity	15

X-Form Engineering Limited

Church Road, Griston, Norfolk, IP25 6QA, England

sales@xformeng.com

Important Information

This manual details the relevant use, safety instructions, and maintenance procedures for the Multi Shovel. This document is not a training manual. Operators will need to be trained in the necessary skills to use the attachments before trying to work with it, or they risk being a danger to themselves and the people around them.

Important

Do not attempt to install, operate, or maintain any attachment until you have read and understood all the relevant operator documentation for both the attachment and the carrier machine. Pay strict attention to all relevant safety information. You must observe all relevant laws and regulations.

Intended Use

The Multi Shovel is designed for handling loose agricultural materials such as, bedding straw, straw based manure, silage, thin hedge trimmings and large bales. This attachment must only be used for this purpose and under no circumstances should it be used as a lifting device, access platform, moving of palletised loads, moving logs or industrial waste handling.

Carrier Machine Suitability

Always check the load capacity of the carrier machine is sufficient to use with the attachment. Make sure the carrier machine has the correct hitch pick-up / bracket type for the attachment and the auxiliary hydraulic hoses are of a suitable length. To operate this attachment, the carrier machine must be installed with an auxiliary hydraulic circuit.

Servicing

Only routine maintenance, as detailed in this manual, should be carried out by the user. It is recommended that major servicing be carried out by your respective dealer. When servicing, making adjustments, or cleaning, ensure that the appropriate personal protective equipment is worn. Always switch off the carrier machine and remove the key before servicing.

Product Identification

The Multi Shovel has an identification plate located on the rear of the attachment. Use the 'Part Number' when identifying replacement parts.

		X-Form Engineering Griston IP25 6QA UK info@xformeng.com			
Part Number		Weight			
Model		Max Flow Max Pressure			
Pick-up Type		Rated Capacity			
Serial Number		Year of Manufacture			

IMPORTANT Visit www.xformeng.com and read manual before use XF-IDHSv1

ID Plate Item	Description
Part Number	Attachment part number
Model	Attachment model
Pick-up Type	Pick-up/bracket hitch type
Serial Number	Unique serial number
Weight	Attachment weight, without tines, shown in kilograms
Max Flow	Maximum hydraulic flow rate shown in litres per minute
Max Pressure	Maximum hydraulic pressure shown in bar
Rated Capacity	Rated capacity shown in cubic meters
Year of Manufacture	Year the attachment was manufactured

Safety Instructions



Warning

To operate the machine with the attachment safely, you must have the appropriate training and be authorised to use them. It is essential that operators observe all safety instructions as incorrect use can endanger life. You must abide by all relevant laws, including health and safety regulations that apply to the country you are operating in.

General Safety

In this manual, and on the attachment and machine, you will find warning messages. Read and understand them. They tell you of potential hazards and how to avoid them.

- Do not work with the attachment and machine until you are sure that you can control it and are sure that you and others around you will be safe.
- If you are unsure of anything about the attachments, machine, or the job, ask someone who knows. Do not assume anything.

Safety Labels

- Safety labels on the attachment and machine warn you of possible hazards. You can be injured if you do not obey the safety instructions shown.
- If you require eyeglasses for reading, make sure they are worn when reading safety labels. Do not over-stretch or place yourself in a dangerous position to read the safety labels.
- Keep all safety labels clean and readable. Replace lost or damaged safety labels.

Risk Assessment

- It is essential that a risk assessment of the work to be performed is completed and that the operator complies with all safety precautions that the assessment identifies. Do not put your life or others at risk.
- **DANGER!** It is the responsibility of the operator to assess factors affecting machine stability, including size and type load, angle of elevation, the distance the boom is extended, ground condition (remember that wet ground will not support the same loads as when dry), wind speed and direction before operating the machine.
- If you are unsure of the suitability of the attachment or machine for a specific task, contact your attachment/machine manufacturer or distributor, who will be able to advise you.

Installation & Removal



Warning

Keep other people clear of the area while you engage the attachment. If a second person is to be involved in this procedure, ensure that they keep clear of the machine and attachment until signalled by the operator to proceed.

Important

Before installation of the attachment, make sure it is within the carrier machines lifting capability (refer to carrier machine Operator Manual). The machine loading limits at different boom positions will be shown on the load charts located in the cab of the machine and/or in the carrier machine Operator Manual.

Installation of the Attachment

Never attempt to move the attachment manually. Pay particular attention to the safety notices and any specific notes about handling and installing (refer to carrier machines Operator Manual for hitching procedure). Remove any attachment from the pick-up/bracket hitch before proceeding.

- Make sure the attachment has the same pick-up/bracket hitch type as the carrier machine (the attachments pick-up type is shown on identification plate).
- Make sure the attachment is on firm, level ground and will not tip over.
- Fully engage the attachment with the carrier machines pick-up/bracket hitch.
- **IMPORTANT** Lock the attachment onto the carrier machine.
- Release the hydraulic pressure from the system prior to coupling/decoupling the hydraulic hoses (refer to the carrier machines Operator Manual procedure for connecting and disconnecting to the machines auxiliary hydraulic system). Make sure that the hydraulic hoses are coupled correctly.

Removal of the Attachment

- Removal is the opposite to installation.

Multi Shovel Side Plates

The multi shovel can be used with and without the shovel side plates.

When installing the side plates observe the following:

- Install the bolts facing inward.
- Install washer under nut.
- Tighten nut and bolt.

Operating Instructions



Warning

Make sure that you have had adequate training and that you are confident in your ability to operate the attachment safely before you operate it.

Important Safety Instructions

- Before using the attachment, ensure regular maintenance has been carried out and it is in good working order.
- Ensure the area is clear of personnel and other equipment before and during the operation of the attachment. If anyone enters the operating area, stop work and turn off the carrier machine.
- Ensure the attachment does not restrict forward vision or important sight-lines.
- Avoid electric power cables. You could be electrocuted or badly burned if you get the machine or its attachments too close to electrical power cables.
- When leaving the carrier machine, lower the attachment to the ground and turn off the engine.
- Make sure the proposed material to be moved does not exceed the combined weight of the attachment and the rated lifting capacity of the carrier machine.

Operation of the Attachment

CAUTION! This attachment can cause damage to the front tyres when the boom is lowered and the carriage is tilted forward. Exercise caution when lowering the boom with the carriage tilted forward when an attachment is fitted.

- Operate the hydraulic auxiliary controls to open/close the grab.
- With the grab open, carefully drive into the material you wish to handle.
- Close the grab, gently crowd the grab back and raise the boom slightly.
- If the load appears to be unstable, lower the load, and repeat the previous steps until the load is fully stable.
- To empty, raise the boom to the required position, dump the multi shovel forward, and open the grab. Return to level position before lowering.
- If the multi shovel grab is used as a rake to drag materials into position for being picked up, the grab must be completely opened. Applying a raking-type force to the partially opened grab will greatly increase hydraulic pressure and may cause components to fail, which will void any warranty.
- Avoid the wear edge or tines scrapping the ground with excessive force as this will increase wear.

Transporting Loads



Warning

The safe transit of the load is the responsibility of the machine operator and transport contractor. Any load that may move during transit must be adequately secured.

Transporting Loads with the Attachment

Before transporting loads with the attachment, make sure you obey the local rules and laws where the load will be carried through.

- Slowly raise the load to the minimum height required to safely cross the terrain, ensuring the load weight is within the capacity of the carrier machine.
- Operate the machine whilst ensuring the load always remain level.
- Accelerate, turn and brake gradually.
- Avoid any obstacles, bumps or holes on your intended path.
- Frequently check load to ensure the load has not become unstable.

Preparing the Attachment for Travel

It is your responsibility to comply with all the relevant local laws and regulations before taking the machine and attachment on the road or on site.

Maintenance



Warning

The hydraulic system is under high pressure. Hydraulic oil forced out under pressure can break the skin and cause severe injury. Before working on the hydraulics, release the pressure from the system and turn the machine engine off.

Daily Checks

- Check attachment hydraulic hoses for faults. Some examples of faults include but are not limited to; end fitting damaged or leaking, outer covering chafed or cut and wire reinforcing exposed, evidence of kinking or crushing on flexible parts of the hose, armouring embedded in outer cover, or the end fitting being displaced. Replace if necessary with high pressure hoses (ensure you have a competent knowledge and training of hydraulic maintenance before attempting to change or repair a hose).
- Check the hydraulic fittings/hoses for tightness.
- Check all bolts and pins for damage, breaks or wear. Replace if necessary.
- Keep all safety labels clean and legible. Replace if damaged or worn.

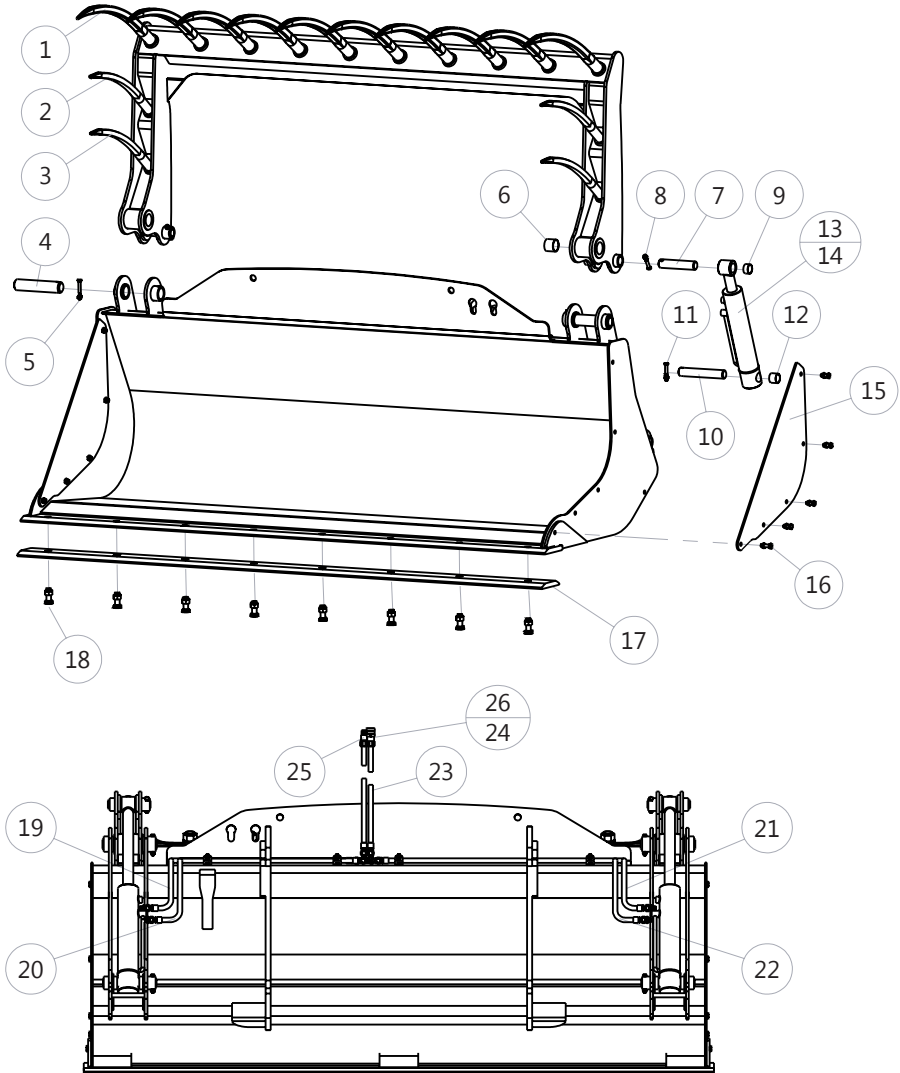
Weekly Checks

- Check wear edges for excessive wear and bolts for tightness.
- Forged tine option. Check tines for excessive wear and nuts for tightness.

Storage

- Clean thoroughly, removing all mud and dirt.
- Inspect for visible signs of wear, breakage, or damage.
- Order any parts required and make the necessary repairs to avoid further wear or damage.
- Tighten loose nuts and hydraulic connections.
- Cap hydraulic couplers to protect against contaminants.
- Check wear edges for excessive wear and bolts for tightness.
- Forged tine option. Check tine nuts for tightness.
- Store in a dry and protected place.

Parts Diagram



27 Safety Label Set

Model Shown MSK-80

MS MH Parts List

Item	Part No.	Description
1		
2		
3		
4	PP45	Pivot Pin 45mm
5	PP45_BS	Pivot Pin 45mm Nut & Bolt Set
6	PP45_DU	Pivot Pin 45mm DU Bush
7	H RTP35	Hydraulic Ram Top Pin 35mm
8	H RTP35_BS	Hydraulic Ram Top Pin 35mm Nut & Bolt Set
9	H RTP35_DU	Hydraulic Ram Top Pin 35mm DU Bush
10	H RBP35	Hydraulic Ram Bottom Pin 35mm
11	H RBP35_BS	Hydraulic Ram Bottom Pin 35mm Nut & Bolt Set
12	H RBP35_DU	Hydraulic Ram Bottom Pin 35mm DU Bush
13	H R250	Hydraulic Ram 250mm Stroke
14	H RSK	Hydraulic Ram Seal Kit
15	M?*_SP	Multi Shovel Side Plate
16	MS_SPBS	Multi Shovel Side Plate Nut & Bolt Set (Set of 5)
17	WE150_PB_??*	HB500 Plough Bolt Reversible Wear Edge
18	WE_PB	Plough Bolt, Washer & Nut
19	MS_HTL_??*	Multi Shovel Hydraulic Hose Top Left
20	MS_HBL_??*	Multi Shovel Hydraulic Hose Bottom Left
21	MS_HTR_??*	Multi Shovel Hydraulic Hose Top Right
22	MS_HBR_??*	Multi Shovel Hydraulic Hose Bottom Right
23	H HAS	Hydraulic Hose Auxiliary Service
24	Q RBS	Quick Release Bonded Seal
25	Q RM	Quick Release Male
26	Q RF	Quick Release Female
27	MS_SLS	Multi Shovel Safety Label Set

*Replace '??' with the 2 numbers in the Part Number (see Product Identification).

**Replace '?' with the second letter in the Part Number (see Product Identification).

MSK MHK Parts List

Item	Part No.	Description
1	M?**K_CTF	Multi Shovel Forged Curved Tine Front
2	M?**K_CTSM	Multi Shovel Forged Curved Tine Side Middle
3	M?**K_CTSR	Multi Shovel Forged Curved Tine Side Rear
4	PP45	Pivot Pin 45mm
5	PP45_BS	Pivot Pin 45mm Nut & Bolt Set
6	PP45_DU	Pivot Pin 45mm DU Bush
7	H RTP35	Hydraulic Ram Top Pin 35mm
8	H RTP35_BS	Hydraulic Ram Top Pin 35mm Nut & Bolt Set
9	H RTP35_DU	Hydraulic Ram Top Pin 35mm DU Bush
10	H RBP35	Hydraulic Ram Bottom Pin 35mm
11	H RBP35_BS	Hydraulic Ram Bottom Pin 35mm Nut & Bolt Set
12	H RBP35_DU	Hydraulic Ram Bottom Pin 35mm DU Bush
13	HR250	Hydraulic Ram 250mm Stroke
14	HRSK	Hydraulic Ram Seal Kit
15	M?**_SP	Multi Shovel Side Plate
16	MS_SPBS	Multi Shovel Side Plate Nut & Bolt Set (Set of 5)
17	WE150_PB_??*	150x20mm HB500 Plough Bolt Reversible Wear Edge
18	WE_PB	Plough Bolt, Washer & Nut
19	MS_HTL_??*	Multi Shovel Hydraulic Hose Top Left
20	MS_HBL_??*	Multi Shovel Hydraulic Hose Bottom Left
21	MS_HTR_??*	Multi Shovel Hydraulic Hose Top Right
22	MS_HBR_??*	Multi Shovel Hydraulic Hose Bottom Right
23	H HAS	Hydraulic Hose Auxiliary Service
24	QRBS	Quick Release Bonded Seal
25	QRM	Quick Release Male
26	QRF	Quick Release Female
27	MS_SLS	Multi Shovel Safety Label Set

*Replace '??' with the 2 numbers in the Part Number (see Product Identification).

**Replace '?' with the second letter in the Part Number (see Product Identification).

Warranty

Our products are warranted for a period of 12 months from the date of delivery. The warranty does not apply to wear parts. Any work carried out on our products while under warranty must be done with written agreement from X-Form Engineering. At our discretion, we may require that the product be returned to us for rectification work and apply transport charges.

X-Form Engineering shall not be liable in any circumstances for any loss, injury, or expense, whether direct or indirect, which may arise for any reason whatsoever in connection with any goods supplied or work done.

X-Form Engineering Limited

Church Road, Griston, Norfolk, IP25 6QA, England

sales@xformeng.com

**UK
CA**

Declaration of Conformity

In accordance with UK Government guidance

Document Ref: XF_UKCA_MS_2026

Product: Multi Shovel

Model(s): MS / MSK / MH / MHK Ranges

Manufacturer: X-Form Engineering Limited
Church Road, Griston, Norfolk, IP25 6QA, England

This declaration is issued under the sole responsibility of the manufacturer.

Object of Declaration: Telehandler / loader hydraulically operated agricultural multi shovel. Fabricated from high strength and wear resistant edges. Fitted with hydraulic cylinders, hoses and fittings. Includes option for forged tines.

The object of the declaration described above is in conformity with the relevant UK Statutory Instruments (and their amendments):

2008 No. 1597 Supply of Machinery (Safety) Regulations 2008

The manufacture applied the procedure for assessment of conformity with internal checks on manufacture. A conformity assessment body was not involved.

Additional Information: Technical documentation for the product is available from the manufacturer.

Authorised Signature: *Chris Leslie*
Chris Leslie | Technical Director of X-Form Engineering

Place of Issue: Church Road, Griston, Norfolk, IP265 6QA, England

Date Issued: 1st June 2026



Declaration of Conformity

EC Machinery Directive 2006/42 EC

Document Ref: XF_CE_MS_2026

Manufacturer: X-Form Engineering Limited
Church Road
Griston
Norfolk
IP25 6QA
England

Product: Telehandler / loader hydraulically operated agricultural multi shovel. Fabricated from high strength and wear resistant edges. Fitted with hydraulic cylinders, hoses and fittings. Includes option for forged tines.

Model(s): MS / MSK / MH / MHK Multi Shovel Ranges

Directive(s): 2006/42/EC Machinery Directive
Transposed Harmonised Standards: BS EN 1553 (2000)

We declare that the product named above complies with the relevant sections of the above referenced directive(s), including all the applicable essential health and safety requirements of the directive.

Signed: *Chris Leslie*

Name: Chris Leslie

Position: Technical Director of X-Form Engineering Limited

Date: 1st June 2026