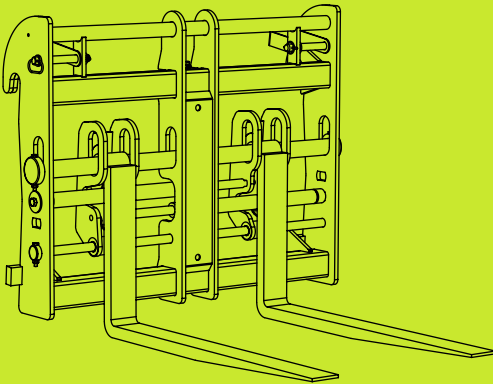


Fork Positioner

Manual 2026



Contents

Important Information	3
Product Identification	4
Safety Instructions	5
Installation & Removal	6
Operating Instructions	7
Transporting Loads	8
Maintenance	9
Parts Diagram	10
Parts List	11
Warranty	12
UKCA Declaration of Conformity	13
CE Declaration of Conformity	14

X-Form Engineering Limited

Church Road, Griston, Norfolk, IP25 6QA, England

sales@xformeng.com

Important Information

This manual details the relevant use, safety instructions, and maintenance procedures for the Fork Positioner. This document is not a training manual. Operators will need to be trained in the necessary skills to use the attachments before trying to work with it, or they risk being a danger to themselves and the people around them.

Important

Do not attempt to install, operate, or maintain any attachment until you have read and understood all the relevant operator documentation for both the attachment and the carrier machine. Pay strict attention to all relevant safety information. You must observe all relevant laws and regulations.

Intended Use

The Fork Positioner is designed to be used only with loads intended to be moved by pallet forks. This attachment must only be used for this purpose and under no circumstances should it be used as a lifting device or access platform.

Carrier Machine Suitability

Always check the load capacity of the carrier machine is sufficient to use with the attachment. Make sure the carrier machine has the correct hitch pick-up / bracket type for the attachment and the auxiliary hydraulic hoses are of a suitable length. To operate this attachment, the carrier machine must be installed with an auxiliary hydraulic circuit.

Servicing

Only routine maintenance, as detailed in this manual, should be carried out by the user. It is recommended that major servicing be carried out by your respective dealer. When servicing, making adjustments, or cleaning, ensure that the appropriate personal protective equipment is worn. Always switch off the carrier machine and remove the key before servicing.

Product Identification

The Fork Positioner has an identification plate located on the rear of the attachment. Use the 'Part Number' when identifying replacement parts.

		X-Form Engineering Griston IP25 6QA UK info@xformeng.com			
Part Number		Weight			
Model		Max Flow Max Pressure			
Pick-up Type		RLL			
Serial Number		Year of Manufacture			

IMPORTANT Visit www.xformeng.com and read manual before use XF-IDFPv1

ID Plate Item	Description
Part Number	Attachment part number
Model	Attachment model
Pick-up Type	Pick-up/bracket hitch type
Serial Number	Unique serial number
Weight	Attachment weight, without tines, shown in kilograms
Max Flow	Maximum hydraulic flow rate shown in litres per minute
Max Pressure	Maximum hydraulic pressure shown in bar
RLL	Rated lifting load shown in kilograms
Year of Manufacture	Year the attachment was manufactured

Safety Instructions



Warning

To operate the machine with the attachment safely, you must have the appropriate training and be authorised to use them. It is essential that operators observe all safety instructions as incorrect use can endanger life. You must abide by all relevant laws, including health and safety regulations that apply to the country you are operating in.

General Safety

In this manual, and on the attachment and machine, you will find warning messages. Read and understand them. They tell you of potential hazards and how to avoid them.

- Do not work with the attachment and machine until you are sure that you can control it and are sure that you and others around you will be safe.
- If you are unsure of anything about the attachments, machine, or the job, ask someone who knows. Do not assume anything.

Safety Labels

- Safety labels on the attachment and machine warn you of possible hazards. You can be injured if you do not obey the safety instructions shown.
- If you require eyeglasses for reading, make sure they are worn when reading safety labels. Do not over-stretch or place yourself in a dangerous position to read the safety labels.
- Keep all safety labels clean and readable. Replace lost or damaged safety labels.

Risk Assessment

- It is essential that a risk assessment of the work to be performed is completed and that the operator complies with all safety precautions that the assessment identifies. Do not put your life or others at risk.
- **DANGER!** It is the responsibility of the operator to assess factors affecting machine stability, including size and type load, angle of elevation, the distance the boom is extended, ground condition (remember that wet ground will not support the same loads as when dry), wind speed and direction before operating the machine.
- If you are unsure of the suitability of the attachment or machine for a specific task, contact your attachment / machine manufacturer or distributor, who will be able to advise you.

Installation & Removal



Warning

Keep other people clear of the area while you engage the attachment. If a second person is to be involved in this procedure, ensure that they keep clear of the machine and attachment until signalled by the operator to proceed.

Important

Before installation of the attachment, make sure it is within the carrier machines lifting capability (refer to carrier machine Operator Manual). The machine loading limits at different boom positions will be shown on the load charts located in the cab of the machine and/or in the carrier machine Operator Manual.

Forks

The Fork Positioner is designed for use with 100mm wide floating pallet forks (pin mounted). Ensure forks are suitable for the diameter of the mounting bar and are rated at, or above, the Rated Lifting Load (RLL) shown on the identification plate.

Installation of the Attachment

Never attempt to move the attachment manually. Pay particular attention to the safety notices and any specific notes about handling and installing (refer to carrier machines Operator Manual for hitching procedure). Remove any attachment from the pick-up/bracket hitch before proceeding.

- Make sure the attachment has the same pick-up/bracket hitch type as the carrier machine (the attachments pick-up type is shown on identification plate).
- Make sure the attachment is on firm, level ground and will not tip over.
- Fully engage the attachment with the carrier machines pick-up/bracket hitch.
- **IMPORTANT** Lock the attachment onto the carrier machine.
- Release the hydraulic pressure from the system prior to coupling/decoupling the hydraulic hoses (refer to the carrier machines Operator Manual procedure for connecting and disconnecting to the machines auxiliary hydraulic system). Make sure that the hydraulic hoses are coupled correctly.

Removal of the Attachment

- Removal is the opposite to installation.

Operating Instructions



Warning

Make sure that you have had adequate training and that you are confident in your ability to operate the attachment safely before you operate it.

Important Safety Instructions

- Before using the attachment, ensure regular maintenance has been carried out and it is in good working order.
- Ensure the area is clear of personnel and other equipment before and during the operation of the attachment. If anyone enters the operating area, stop work and turn off the carrier machine.
- Ensure the attachment does not restrict forward vision or important sight-lines.
- Avoid electric power cables. You could be electrocuted or badly burned if you get the machine or its attachments too close to electrical power cables.
- When leaving the carrier machine, lower the attachment to the ground and turn off the engine.
- Make sure the proposed material to be moved does not exceed the combined weight of the attachment and the rated lifting capacity of the carrier machine.
- Loads can fall off incorrectly spaced forks. Always space the forks correctly for the load and ensure the forks are completely under the load before lifting.
- Do not use the hydraulic auxiliary controls when the forks are under load.
- Under no circumstances should the attachment be used to clamp or carry items between the pallet forks.

Operation of the Attachment

The Fork Positioner allows the operator to position both forks simultaneously by changing the fork spacing. The fork spacing is controlled by the auxiliary control from the operator station of the carrier machine.

- Operate the hydraulic auxiliary controls to increase/decrease the fork spacing.
- Set the forks in the correct positions before entering the intended load.
- Slowly drive towards the load until the forks are completely under the load.
- Gently crowd back the machine's headstock and lift the load.

Transporting Loads

Warning

The safe transit of the load is the responsibility of the machine operator and transport contractor. Any load that may move during transit must be adequately secured.

Transporting Loads with the Attachment

Before transporting loads with the attachment, make sure you obey the local rules and laws where the load will be carried through.

- Slowly raise the load to the minimum height required to safely cross the terrain, ensuring the load weight is within the capacity of the carrier machine.
- Operate the machine whilst ensuring the load always remain level.
- Accelerate, turn and brake gradually.
- Avoid any obstacles, bumps or holes on your intended path.
- Frequently check load to ensure the load has not become unstable.

Preparing the Attachment for Travel

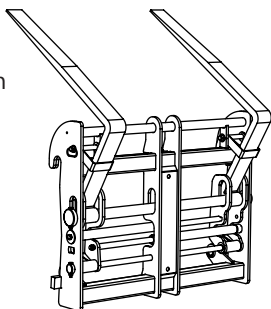
It is your responsibility to comply with all the relevant local laws and regulations before taking the machine and attachment on the road or on site.

Road Travel

Forks are heavy. Take care when lifting forks or folding back the forks.

- Fully retract and lower the boom, then raise it slightly.
- Tilt the carriage back, keeping the forks above the ground.
- Move the forks to their widest position.
- Turn off the machine and then remove fork retention pins and red loops.
- Carefully lift the forks into the transport position and secure them with retaining loops and pins.

Fork Transport Position



Maintenance



Warning

The hydraulic system is under high pressure. Hydraulic oil forced out under pressure can break the skin and cause severe injury. Before working on the hydraulics, release the pressure from the system and turn the machine engine off.

Daily Checks

- Check attachment hydraulic hoses for faults. Some examples of faults include but are not limited to; end fitting damaged or leaking, outer covering chafed or cut and wire reinforcing exposed, evidence of kinking or crushing on flexible parts of the hose, armouring embedded in outer cover, or the end fitting being displaced. Replace if necessary with high pressure hoses (ensure you have a competent knowledge and training of hydraulic maintenance before attempting to change or repair a hose).
- Check the hydraulic fittings/hoses for tightness.
- Check all bolts and pins for damage, breaks or wear. Replace if necessary.
- Keep all safety labels clean and legible. Replace if damaged or worn.
- Lubricate all grease fittings. Avoid excessive greasing; dirt collects on exposed grease and greatly increases wear. After greasing, wipe off excessive grease from fittings.
- Clean the chrome bars to allow the fork sliders to work freely.

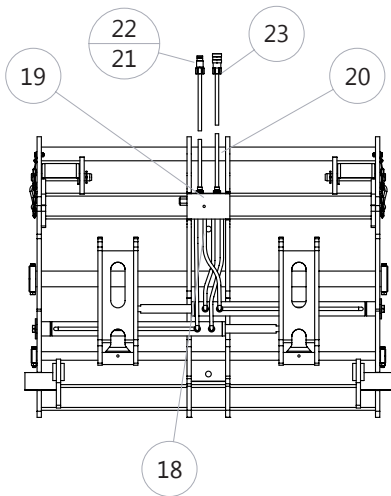
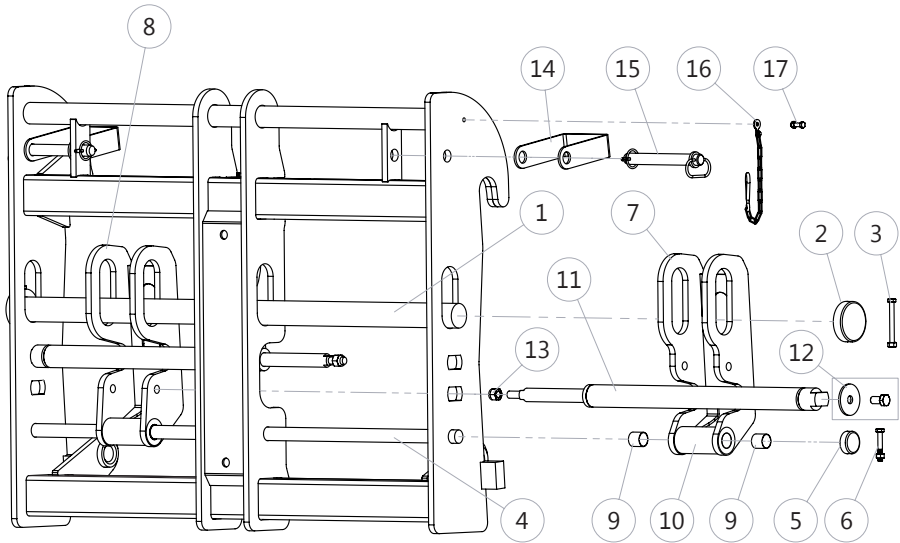
Weekly Checks

- Check forks for excessive wear.

Storage

- Clean thoroughly, removing all mud, dirt and grease.
- Inspect for visible signs of wear, breakage, or damage.
- Order any parts required and make the necessary repairs to avoid further wear or damage.
- Tighten loose nuts and hydraulic connections.
- Cap hydraulic couplers to protect against contaminants.
- Lubricate all grease fittings.
- Check forks for excessive wear.
- Store in a dry and protected place.

Parts Diagram



24 Safety Label Set

Model Shown FP12-50

FP Parts List

Item	Part No.	Description
1	FP12-50_CB FP12-57_CB	FP12-50 Chrome Bar 50mm FP12-57 Chrome Bar 57mm
2	FP12-50_CBRC FP12-57_CBRC	FP12-50 Chrome Bar Retaining Cap 50mm FP12-57 Chrome Bar Retaining Cap 57mm
3	FP_CBBS	FP Chrome Bar Nut & Bolt Set
4	FP_SB	FP Chrome Slider Bar
5	FP_SBRC	FP Chrome Slider Bar Retaining Cap
6	FP_SBBS	FP Chrome Slider Bar Nut & Bolt Set
7	FP_FSL	FP Fork Slider Left
8	FP_FSR	FP Fork Slider Right
9	FP_FSBI	FP Fork Slider Bush Insert
10	FP_FSGN	FP Fork Slider Grease Nipple
11	FP_HC FP_HCSK	FP Hydraulic Cylinder FP Hydraulic Cylinder Seal Kit
12	FP_HCBS	FP Hydraulic Cylinder Bolt & Washer Set
13	FP_HCRN	FP Hydraulic Cylinder Rod Nut
14	FP_FRP	FP Fork Retaining Pin
15	FP_FRL	FP Fork Retaining Loop
16	FP_SHC	FP Spring Hook & Chain
17	FP_SHCBS	FP Spring Hook & Chain Nut & Bolt Set
18	FP_HHAS	FP Hydraulic Hose Value Block (Set of 4)
19	FP_VBC FP_VBBO FP_VBFC FP_VBPR	FP Valve Block Complete FP Valve Block Body Only FP Valve Block Flow Control Cartridge Valve FP Valve Block Pressure Relief Cartridge Valve
20	FP_HHAS	FP Hydraulic Hose Auxiliary Service
21	QRBS	Quick Release Bonded Seal
22	QRM	Quick Release Male
23	QRF	Quick Release Female
24	FP_SLS	FP Safety Label Set

Warranty

Our products are warranted for a period of 12 months from the date of delivery. The warranty does not apply to wear parts. Any work carried out on our products while under warranty must be done with written agreement from X-Form Engineering. At our discretion, we may require that the product be returned to us for rectification work and apply transport charges.

X-Form Engineering shall not be liable in any circumstances for any loss, injury, or expense, whether direct or indirect, which may arise for any reason whatsoever in connection with any goods supplied or work done.

X-Form Engineering Limited

Church Road, Griston, Norfolk, IP25 6QA, England

sales@xformeng.com



Declaration of Conformity

In accordance with UK Government guidance

Document Ref: XF_UKCA_FP_2026

Product: Fork Positioner

Model(s): FP Range

Manufacturer: X-Form Engineering Limited
Church Road, Griston, Norfolk, IP25 6QA, England

This declaration is issued under the sole responsibility of the manufacturer.

Object of Declaration: Telehandler carriage mounted hydraulically operated fork positioner. Fabricated from high strength steel and hollow sections. Fitted with chrome bars, hydraulic cylinders, valves, hoses and fittings.

The object of the declaration described above is in conformity with the relevant UK Statutory Instruments (and their amendments):

2008 No. 1597 Supply of Machinery (Safety) Regulations 2008

The manufacture applied the procedure for assessment of conformity with internal checks on manufacture. A conformity assessment body was not involved.

Additional Information: Technical documentation for the product is available from the manufacturer.

Authorised Signature: *Chris Leslie*
Chris Leslie | Technical Director of X-Form Engineering

Place of Issue: Church Road, Griston, Norfolk, IP265 6QA, England

Date Issued: 1st June 2026



Declaration of Conformity

EC Machinery Directive 2006/42 EC

Document Ref: XF_CE_FP_2026

Manufacturer: X-Form Engineering Limited
Church Road
Griston
Norfolk
IP25 6QA
England

Product: Telehandler carriage mounted hydraulically operated fork positioner. Fabricated from high strength steel and hollow sections. Fitted with chrome bars, hydraulic cylinders, valves, hoses and fittings.

Model(s): FP Fork Positioner Range

Directive(s): 2006/42/EC Machinery Directive
Transposed Harmonised Standards: BS EN 1553 (2000)

We declare that the product named above complies with the relevant sections of the above referenced directive(s), including all the applicable essential health and safety requirements of the directive.

Signed: *Chris Leslie*

Name: Chris Leslie

Position: Technical Director of X-Form Engineering Limited

Date: 1st June 2026